

ENROLLMENT NUMBER:

STUDENT NAME:

Class **5**

Maximum Marks : 100  
Duration : 40 Minutes  
Total Questions : 30

Test Paper Type

**CC**

# **iAIO** <sup>1st</sup> INTERNATIONAL ARTIFICIAL INTELLIGENCE OLYMPIAD 2025-2026

## Instructions for the Candidates

1. For filling up information about yourself on the OMR sheet, you will be given additional ten minutes before the start of the examination.
2. Write your 12-digit IAIO Enrollment Number and your name on top of the Question Paper in the given space.
3. Do not forget to sign the OMR sheet. Also, write your Roll No. on the Question Paper Booklet, and do not take this home.
4. The Question Paper Booklet consists of 30 questions, divided into two sections.
5. Section-A: Artificial Intelligence (25 questions); Section-B: Scholar's Zone (5 questions).
6. Each question of Section-A carries 3 marks, and that of the Scholar's Zone carries 5 marks.
7. All the questions are compulsory, and there is no negative marking.
8. Use of a calculator or any other devices in the examination is strictly prohibited.
9. Choose only ONE OPTION as an answer.
10. BLUE/BLACK ball pen is preferred to darken the circle; however, in case of non-availability, an HB pencil can be used. Mark your choice of answer in the OMR sheet by darkening a circle, as shown below.



1. What does it mean when we say machines “learn from examples”?
 

A. They copy games	B. They improve by studying data patterns
C. They memorise facts without real understanding	D. They only work with new code

---

2. What is a “prediction” in a machine learning project?
 

A. The name of the file	B. A random guess made without data
C. The computer’s guess based on learned patterns	D. A loud beep sound

---

3. AI can sort hundreds of photos by faces, locations, or events. Why is this useful?
  - A. It helps find photos quickly and easily
  - B. It deletes unwanted photos from the gallery automatically
  - C. It randomly changes the order of all stored photos
  - D. It makes all photos appear only in black and white

---

4. How does AI use sorting in emails?
 

A. Deletes all incoming emails automatically	B. Separates important emails from junk messages
C. Forwards all emails to others in a random order	D. Changes the content of emails while sorting

---

5. Machine learning helps computers learn from information to do smart things. Which of these is NOT an example of machine learning in our daily lives?
  - A. A video app suggesting what you should watch next.
  - B. A photo app finding all the pictures of your pet.
  - C. An alarm clock going off at the time you set.
  - D. A game character that learns how you play and gets harder.

---

6. What made Deep Blue’s victory over Garry Kasparov in 1997 so special?
  - A. It was the first time a computer played a full chess game
  - B. Deep Blue was able to speak directly to Garry Kasparov.
  - C. Deep Blue had a human-like appearance and shape
  - D. It was the first time a computer beat a world chess champion

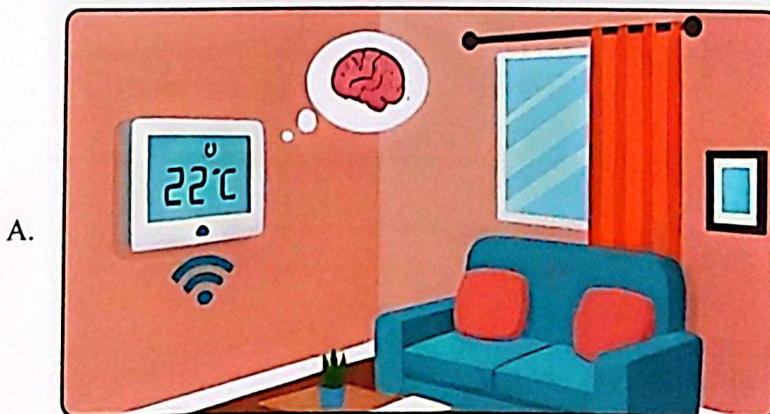
---

7. Which of the following is not a good reason to keep your date of birth private?
 

A. It can be used for identity theft	B. It helps keep your accounts safe
C. It is needed to play games online	D. It could be used to guess your password

---

8. Which situation shows AI being used for safety?



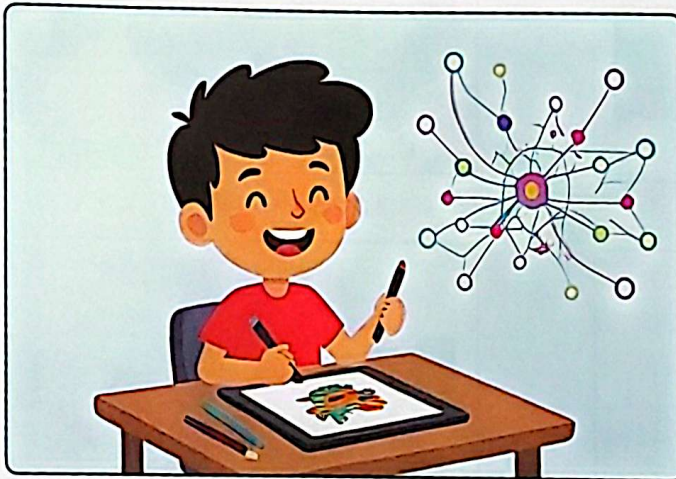
AI controlling the temperature in your house

B.



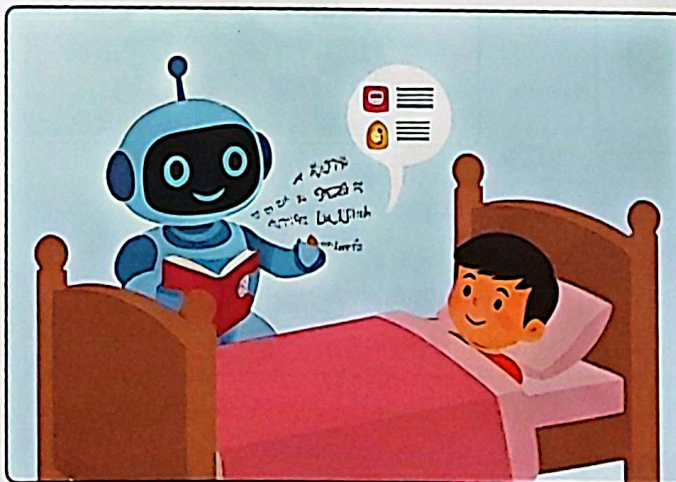
AI warning about a possible flood after analysing weather data

C.



AI helping you draw pictures

D.

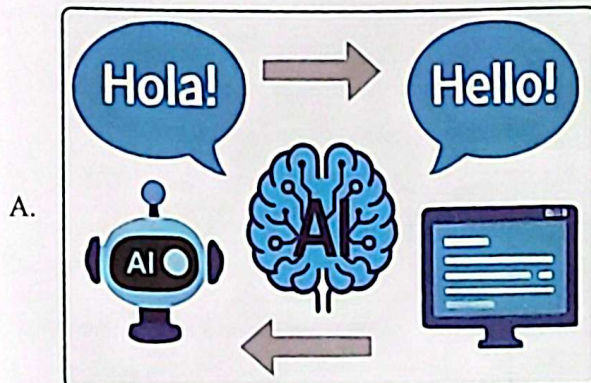


AI reading a bedtime story aloud

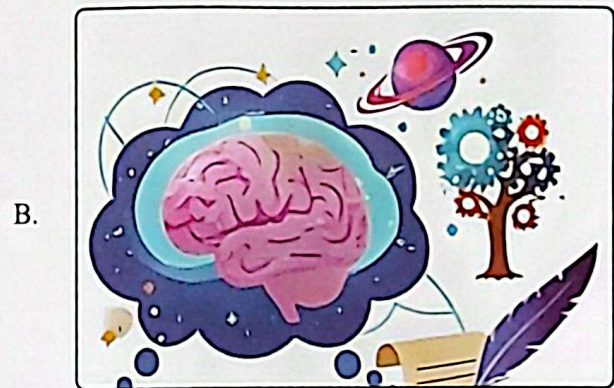
9. What is the first step in training a neural network to recognise animals?
- A. Let it choose random animal names without any real examples
  - B. Ask it to listen to different animal sounds for guessing patterns
  - C. Give only a list of animal names without showing pictures
  - D. Show it many labelled pictures of animals learning accuracy

10. When you watch a video on a streaming service, and it suggests another video you might like, what AI concept is being used?
- A. NLP  
B. Recommendation Engine  
C. GPS  
D. File Compression

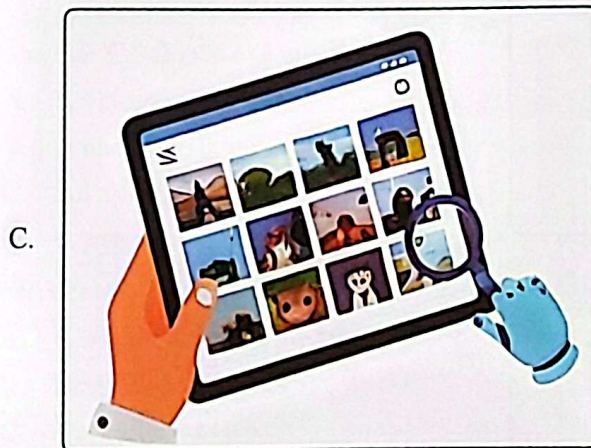
11. Which is the odd one out?



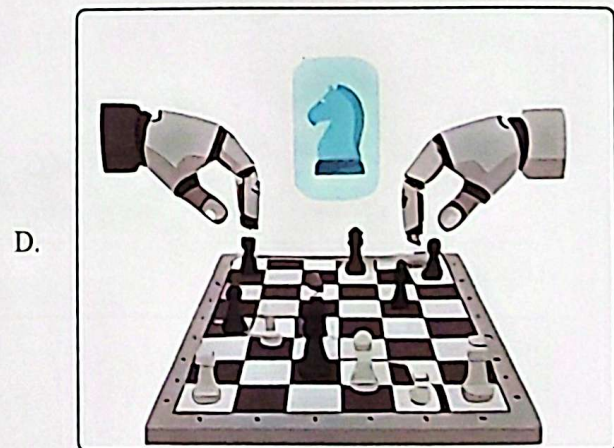
AI can translate languages



AI can write its own dreams



AI can sort photos



AI can play chess

12. What is the output layer of a neural network responsible for?
- A. Memorising data  
B. Training the system  
C. Displaying the result  
D. Predicting patterns

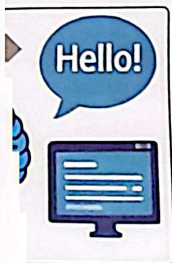
13. What would AI do if given wrongly labelled data?
- A. Get confused and learn the wrong information  
B. Automatically fix all the mistakes on its own  
C. Refuse to use the data completely  
D. Only use the correct labels and ignore others

14. Which of the following is not a data collection tool?
- A. Camera  
B. Sensor  
C. Survey  
D. Joystick

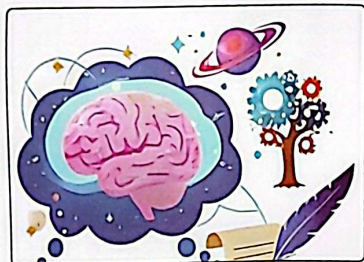
15. Which learning type powers voice assistants like Alexa?
- A. Unsupervised  
B. Reinforcement  
C. Machine Learning  
D. Traditional Programming

a streaming service, and it suggests another video you might like, what AI concept is

- B. Recommendation Engine
- D. File Compression



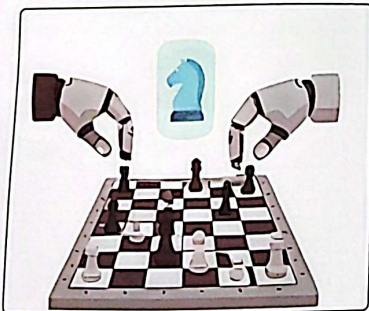
B.



AI can write its own dreams



D.



AI can play chess

ork responsible for?

- B. Training the system
- D. Predicting patterns

d data?

mation

own

hers

tool?

- C. Survey
- D. Joystick

ce Alexa?

- B. Reinforcement
- D. Traditional Programming

REF/AIO25/CC

16. What does "cleaning data" mean?

- A. Deleting the labelled data
- B. Deleting all data
- C. Organising computer files
- D. Fixing mistakes in data

17. Identify the device in the image and choose the statement explaining why it is not considered Artificial Intelligence.



- A. It shows the current time digitally on its small screen
- B. It follows pre-programmed rules without learning
- C. It can notify the user with an alarm at a set time
- D. It is designed to be worn comfortably on the wrist

18. What is data annotation?

- A. Deleting data
- B. Sorting data
- C. Labelling or tagging data
- D. Guessing answers

19. On the Machine Learning for Kids site, what is the confidence bar used for?

- A. To show how quickly the model responds
- B. To measure how many times a model was trained
- C. To display the quality of the input data
- D. To indicate how certain the model is about its answer

20. In a neural network, what happens at a neuron (or node)?

- A. It stores the entire dataset for future use
- B. It sends emails or messages to other networks
- C. It performs a simple calculation on inputs
- D. It deletes unnecessary layers automatically

21. **zomato** uses AI to personalise user experience. Which action is an example of AI at Zomato?

- A. Showing you a list of all the restaurants near your house.
- B. Suggesting a new burger place because you often order burgers.
- C. Letting you tap a button to see only restaurants with five-star ratings.
- D. Showing you the full menu with prices for any restaurant you search for.

22. "This information is OK to share" What part of the data does this relate to?

- A. Privacy
- B. Passwords
- C. Responsibility
- D. Fairness


23. An AI has already been trained to identify different animals in photos. Now, you give it a new photo of a tiger, and it correctly labels it "tiger." This process of using the trained AI to make a prediction is called:

- A. Training
- B. Inference
- C. Debugging
- D. Data Collection

Class: 5 | Page: 5 |

REF/AIO25/CC

24. How do computers group items when they don't have labels?
- By reading labels that are attached to each item
  - By asking users to provide step-by-step instructions
  - By finding patterns and similarities like shape or colour
  - By copying how other computers have grouped items

25.  uses AI to improve music recommendations. Which action is NOT powered by AI?
- Suggesting playlists based on your listening history
  - Creating radio stations similar to your favourite songs
  - Adjusting volume automatically for songs
  - Composing music from scratch on its own

**Section-B (Scholar's Zone)**

26. What is the correct order of AI learning steps?
- Find Patterns → Collect Examples → Make Predictions
  - Collect Examples → Make Predictions → Find Patterns
  - Collect Examples → Find Patterns → Make Predictions
  - Make Predictions → Find Patterns → Collect Examples

27. Statement 1: AI must identify items before arranging them.  
Statement 2: Arranged items can then be used effectively.  
 Which option shows the correct logical relationship?
- Statement 1 is true, Statement 2 is true, and Statement 2 follows Statement 1
  - Statement 1 is true, Statement 2 is true, but Statement 2 does not follow Statement 1
  - Statement 1 is true, Statement 2 is false.
  - Statement 1 is false, Statement 2 is true

28. Match the AI application with its pattern recognition example.

AI Application		Pattern Recognition Example	
1.	Unlocking your phone	a.	Detects unusual patterns in X-rays or scans
2.	Weather forecasting	b.	Suggests the fastest route based on traffic flow
3.	Traffic prediction	c.	Recognises your face pattern to unlock your phone
4.	Medical diagnosis	d.	Uses past weather patterns to predict future conditions
5.	Wildlife conservation	e.	Recognises animal patterns to track endangered species

- 1-c, 2-b, 3-a, 4-d, 5-e
- 1-c, 2-d, 3-b, 4-a, 5-e
- 1-b, 2-c, 3-d, 4-e, 5-a
- 1-d, 2-a, 3-e, 4-b, 5-c

29. Meenu made two lists showing how students can use AI in different ways. Study her lists carefully and choose the correct option.

List I:

- Asking AI to write your homework
- Playing games instead of studying
- Submitting AI-generated stories as your own

List II:

- Using AI for fun learning games
- Organising your study schedule
- Asking AI for creative writing ideas

What do the two lists show?

- A. List I – Responsible AI use; List II – Irresponsible AI use
  - B. Both List I and List II show Responsible AI use
  - C. Both List I and List II show Irresponsible AI use
  - D. List I – Irresponsible AI use; List II – Responsible AI use
- 
30. What type of input do you give to AI if you want it to create a drawing?
- A. A text description like “Draw me a fish”
  - B. Just a single word like “Cat”
  - C. A number like “123”
  - D. A colour name like “Blue”

